

+639173276415





VIEW GOING TO SUPERMARKET



VIEW AT LOUVERS

TA&P CEBU

PERSPECTIVE VIEWS
CITY SOHO CONDOTEL
GOLD PEACH DEVELOPMENT CORPORATION

REPUBLIC ACT 9266

Drawings and specifications duly signed stamped or sealed as instruments of service are the property of T. I Vasquez Architects and Planners, Inc whether the object for which they are made is executed or not, it shall be unlawful for any person, without the written consent of architect to duplicate or make copies of said documents for use of repetition of and for other projects and buildings, whether executed partly or in whole.

PRESIDENTIAL DECREE 49

Works of art, architecture, models and designs are created works and considered part of the Intellectual Property of the architect and author duly protected by and under Presidential Decree No. 49.



City Soho

- Description:
 - 30 storeys
 - B2– basement Parking
 - B1 – Grocery & Supermarket
 - 1st & 2nd floor – Shopping Mall
 - 3rd, 4th, 5th, 6th Floor – 4 Level Parking
 - 7th floor – Amenities
 - 8th floor – GPP Office & Showroom
 - 9th to 19th floor – Medical Office /Commercial Condominium Units
 - 21th to 30th floor – Condo Residential Units



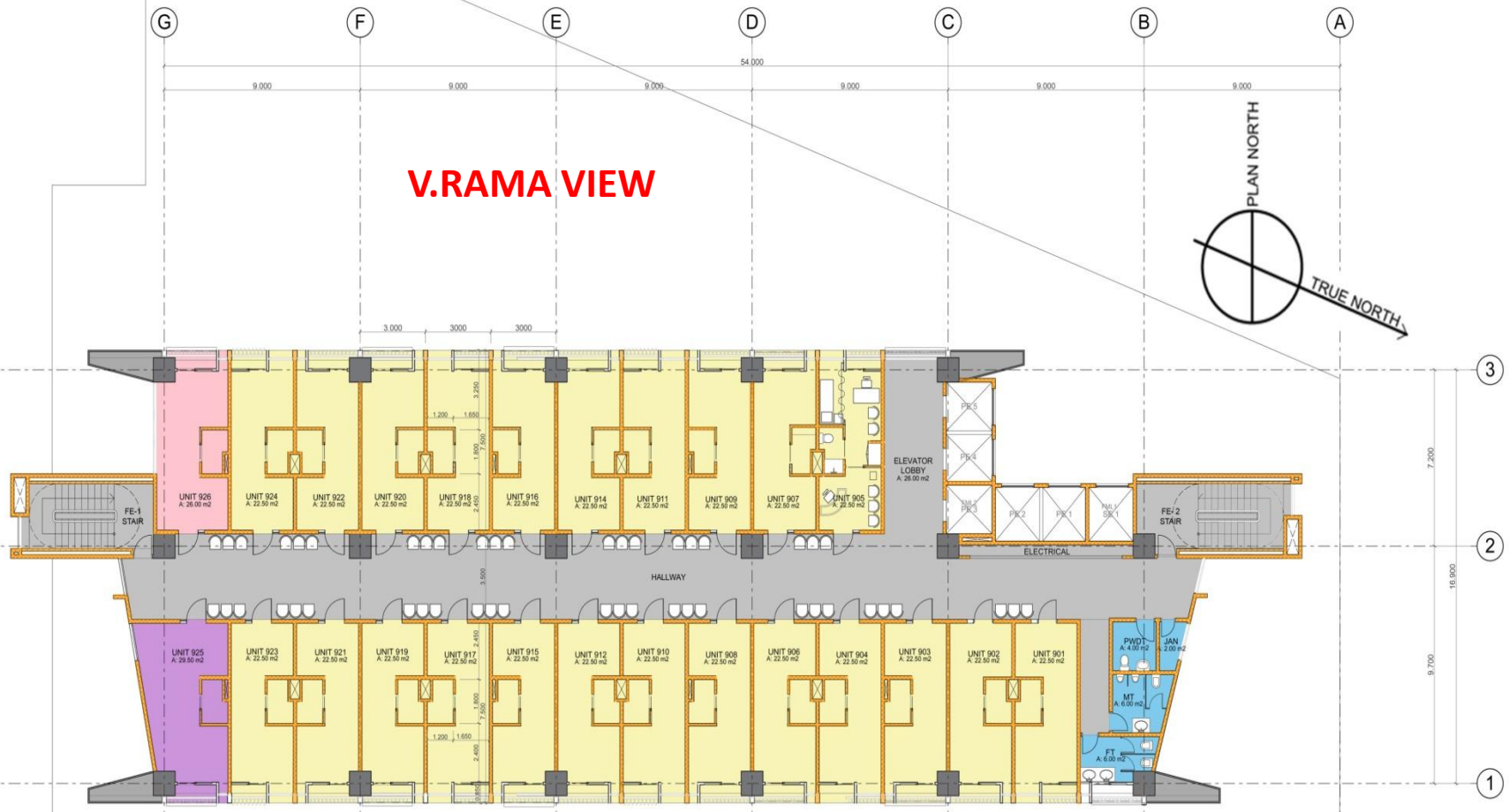
City Soho

BUILDING AMENITIES

- -Multi-level Parking
- -24/7 Security
- -Private Access
- -Roofdeck Pool
- -Function Hall
- -CCTV Surveillance
- -Smart Home System (RF Cards)
- -Gym
- -Grand Lobby and Reception Area
- -4 Elevator Units
- -Phone, Cable, Internet ready
- -Storage Available
- -Fire alarm and sprinkler system

V.RAMA VIEW

B. RODRIGUEZ ST.



FUENTE CIRCLE VIEW

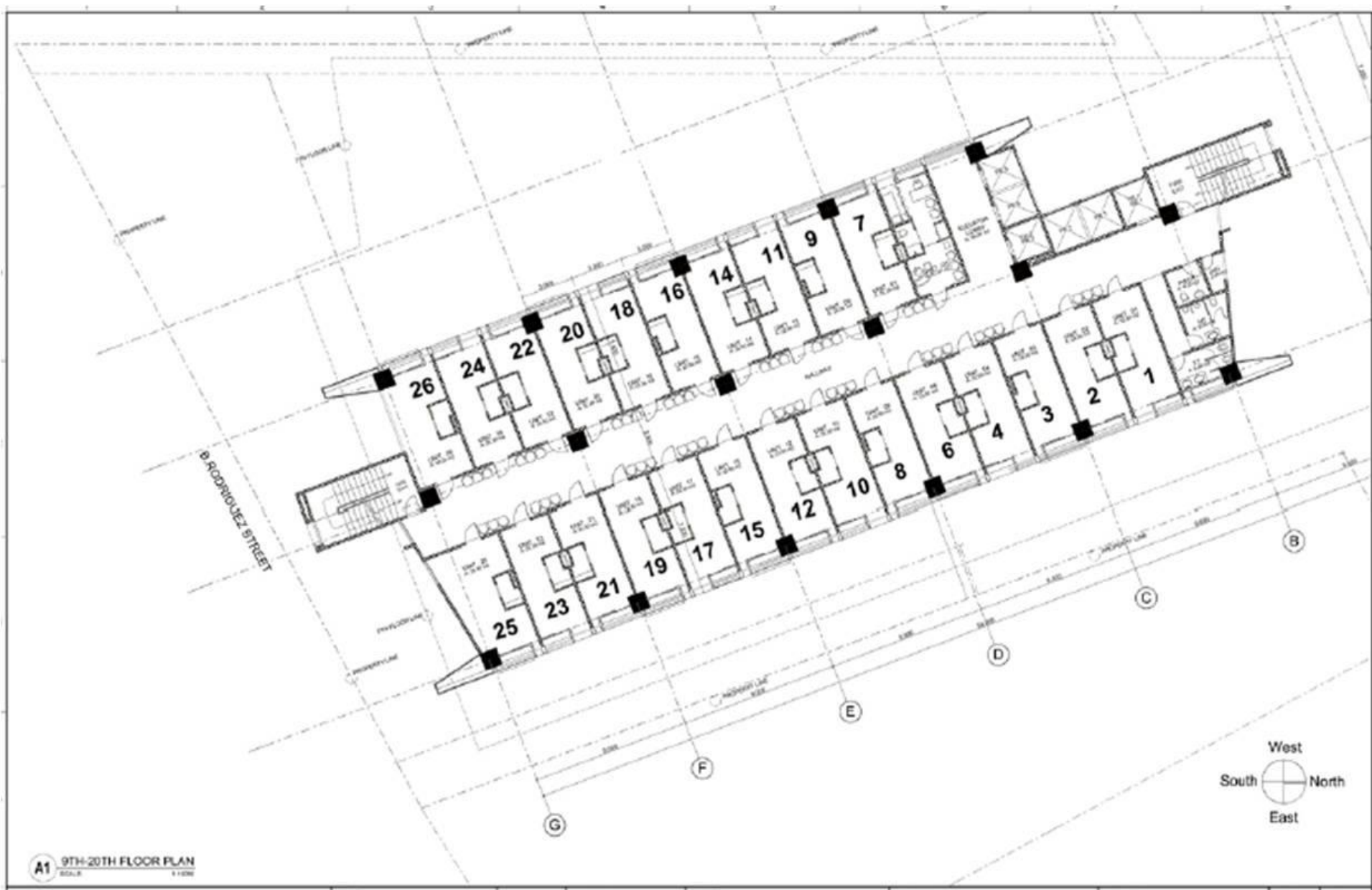
City Soho

B. RODRIGUEZ STREET, CEBU CITY

9th-18th FLOOR - OFFICES

9th-12th FLOOR - MEDICAL CLINICS
15th-16th FLOOR - COMMERCIAL OFFICES
17th-18th FLOOR - MEDICAL CLINICS

THIS IMAGES AND DETAILS SHOWN ARE ARTIST'S RENDITIONS AND ARE INTENDED FOR ILLUSTRATION PURPOSES ONLY. WHILE THE INFORMATION ARE BASED ON PRESENT PLANS, WHICH HAVE BEEN CREATED WITH GREAT CARE AND EFFORT, THE DEVELOPERS RESERVE THE RIGHT TO CHANGE PROPOSAL PROJECT FEATURES, AMENITIES, PRICES AND ITEMS WITHOUT PRIOR NOTICE. MORE FURTHER, THE CLIENT HOLDS THE DEVELOPERS FREE FROM ANY LEGAL AND FINANCIAL CLAIMS RESULTING FROM THE INFORMATION CONTAINED HEREIN.



A1 9TH-20TH FLOOR PLAN
SCALE: 1/8" = 1'-0"

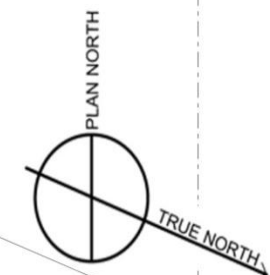
	T.S. YANIGOS ARCHITECTS & PLANNERS CORP. INC. 5077 MALABAR CORNER, CORONADO SUBDIVISION PHASE 2 5077 MALABAR CORNER, CORONADO SUBDIVISION PHASE 2 CEBU CITY, CEBU	PROJECT NO.: DATE:	PROJECT TITLE: PROPOSED CITY SOHO	APPROVED BY: MR. EDUARDO CAISANO, JR. CHAIRMAN/REPRESENTATIVE GOLDPEACH PROPERTIES CORPORATION 6000/6000 MALABAR CORNER CORONADO SUBDIVISION PHASE 2, CEBU CITY	SHEET NO.: SHEET NO. 9TH-20TH FLOOR PLAN	SHEET NO.: A-113
		APPROVED BY: T.S. YANIGOS	PROJECT NO.: 201802-1 (REV. 07/2022) DATE: 08/01/2022 PROJECT: GOLDPEACH SOHO LOCATION: 6 RODRIGUEZ ST., SM CITY	APPROVED BY: MR. EDUARDO CAISANO, JR. CHAIRMAN/REPRESENTATIVE GOLDPEACH PROPERTIES CORPORATION 6000/6000 MALABAR CORNER CORONADO SUBDIVISION PHASE 2, CEBU CITY	SHEET NO.: SHEET NO. 9TH-20TH FLOOR PLAN	SHEET NO.: A-113



DIAGNOSTIC UNIT



V.Rama / Mountain View



B. Rodriguez St.



City Soho

B. RODRIGUEZ STREET, CEBU CITY

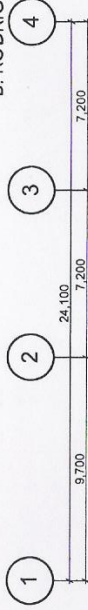
Fuente Circle / City View

THIS IMAGES AND DETAILS SHOWN ARE ARTIST'S RENDITIONS AND ARE INTENDED FOR ILLUSTRATION PURPOSES ONLY. WHILE THE INFORMATION ARE BASED ON PRESENT PLANS, WHICH HAVE BEEN CREATED WITH GREAT CARE AND EFFORT, THE DEVELOPERS RESERVE THE RIGHT TO CHANGE PROPOSAL PROJECT FEATURES, AMENITIES, PRICES AND ITEMS WITHOUT PRIOR NOTICE. MORE FURTHER, THE CLIENT HOLDS THE DEVELOPERS FREE FROM ANY LEGAL AND FINANCIAL CLAIMS RESULTING FROM THE INFORMATION CONTAINED HEREIN.

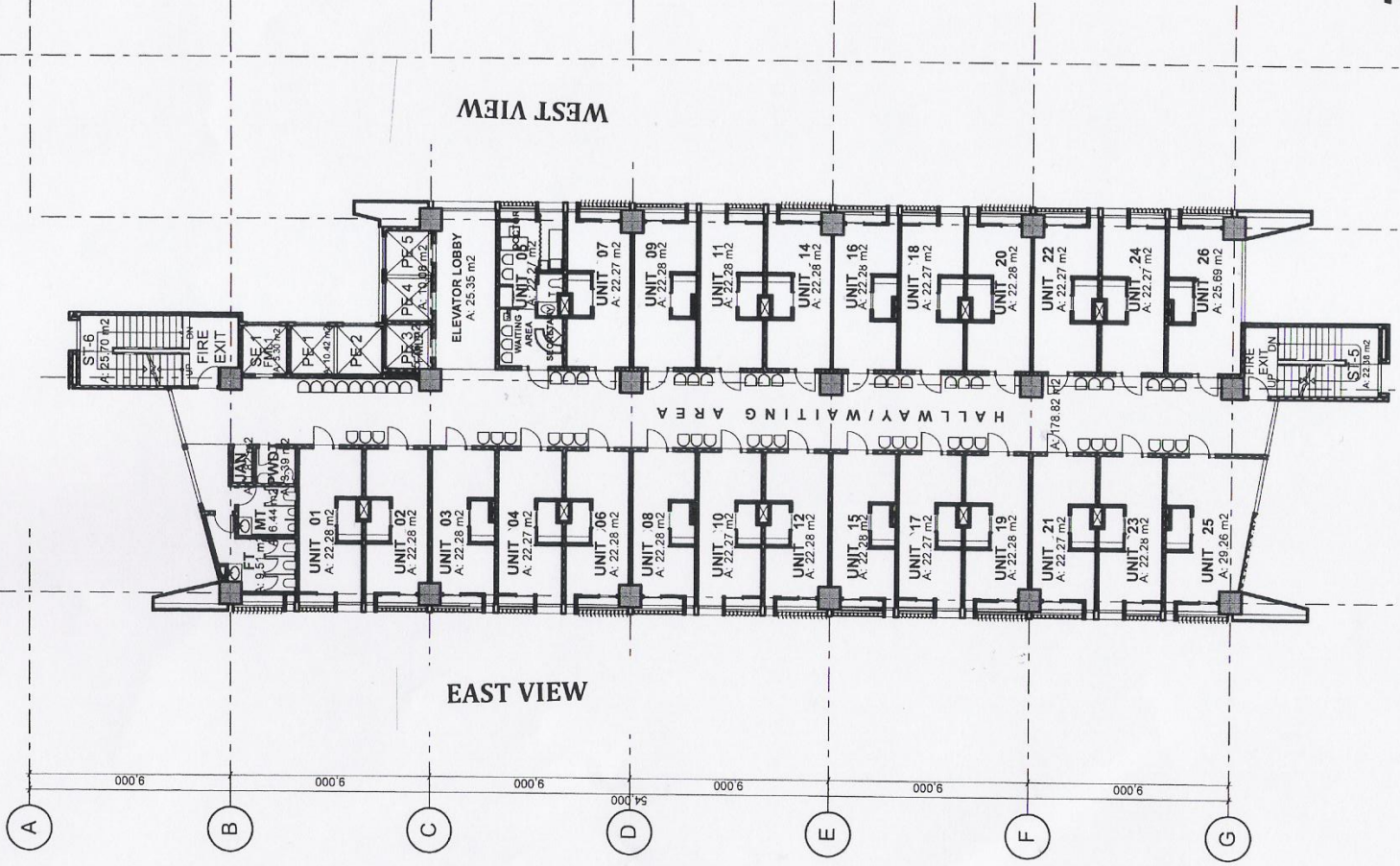
21st-27th FLOOR - RESIDENTIAL

CITY SOHO CONDOTEL

B. RODRIGUEZ ST., CEBU CITY



B. RODRIGUEZ ST.



EAST VIEW

WEST VIEW

9TH-16TH TYPICAL FLOOR PLAN

SCALE:

1:200M

